

EPIGENESSE

BEAUTY  
SCIENCE



Brings new life and energy  
to renew ageing skin

ANESI  
LAB



A scientifically based cosmeceutical range  
with the most-up-to-date advances that  
allows us to target ageing skin in a way that  
has not been possible before.

Not Everything is Certain in our Skin's Future.

ANESI  
LAB

# HOW DOES EPIGENESSE WORK WITH OTHER ANESI PRODUCTS?

---

## URBAN DEFENSE

Protects and repairs the skin from UV, Pollution, Blue Light damage. Prevents premature ageing induced by environmental stress.

## LUMINOSITY

Corrects and prevents hyperpigmentation to restore an even skin tone. Targeted treatment for age-spots.

## CELLULAR 3

For the first signs of ageing and as skin matures. Helps to prevent and control ageing, protecting against the main causes.

## EPIGENESSE

Brings new life and energy to ageing skin.  
Helps to correct ageing, replenish and recover.

# EPIGENESSE

---

Specifically formulated for ageing skin, especially 50 years+

- Dry, depleted skin
- Sun damaged skin
- Dull, lifeless looking complexion
- Wrinkles and poor elasticity
- Poor skin texture and increased pores
- Younger skin that has aged prematurely



# SKIN AGEING

---

## **Late 20's – 30's**

- First signs of ageing begins in the late 20s. A lot of UV damage occurs before age 20 and pigmentation problems might develop.
- Collagen production begins slowing down.
- Changes in fat distribution and loss in the face can also lead to a changing complexion.
- Hormonal changes can trigger breakouts. Women may experience hormonal acne for the first time.

## **40's**

- Skin changes accelerate rapidly and pigmentation problems and wrinkles are more visible.
- Skin becomes more dull looking as cell renewal slows.
- Elastin production stops and overall reduced firmness of the skin is noticeable.
- Glycation accelerates ageing.

## **50's**

- Estrogen levels drop, affecting collagen and skin becomes less plump and taut. Skin lipids also decline resulting in weakened skin barrier and possible inflammation.
- Skin thinning is noticeable and skin is not as resilient.
- Poor elasticity makes pores look noticeably larger.
- Past sun damage and other environmental assaults really show on the face.

## **60's—and Beyond**

Skin thinning becomes exaggerated and crepiness accelerates, making wrinkles appear deeper.

# SKIN AGEING

---

The appearance of our skin depends on our genetics. DNA determines the youth code of our face.

Scientific research in the specialist field of *epigenetics* has revealed that only 35% is determined by DNA, and 65% is determined by **epigenetic factors** such as diet, lifestyle and environment.



External Elements

Sun and environmental pollution

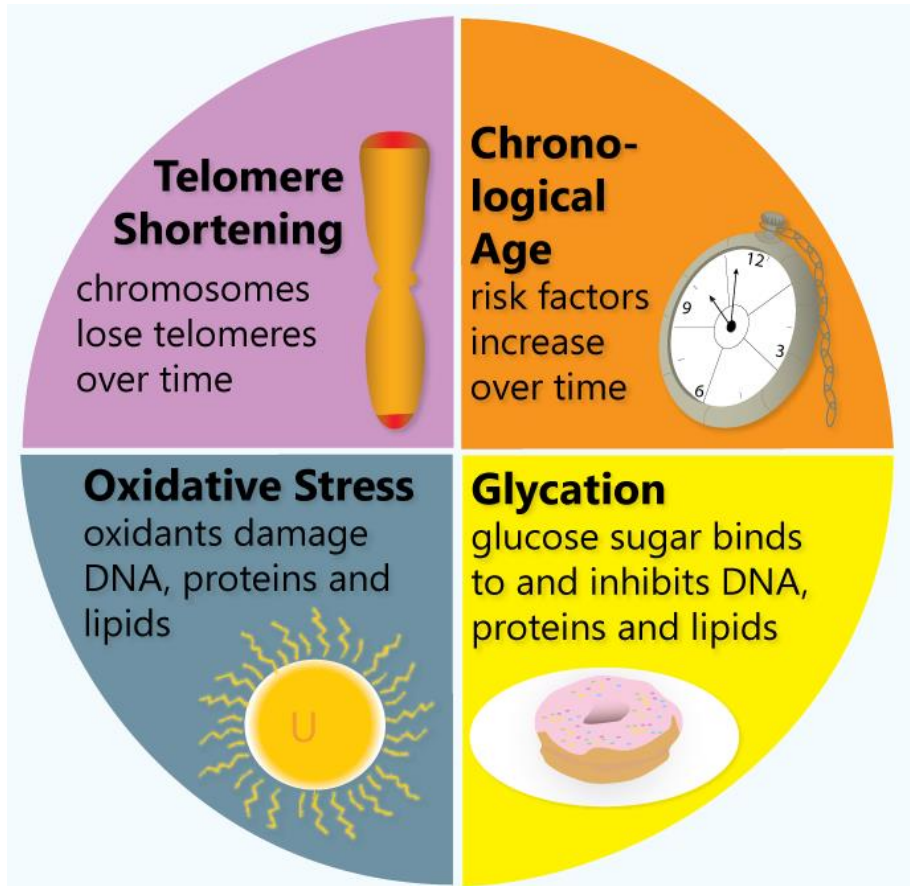


Internal Elements

Stress, lack of sleep and poor diet

# SKIN AGEING

---



Telomeres, found at the end of chromosomes as protective shields for DNA, play an important role in cell division as they help preserve DNA information.

As ageing occurs, telomeres shorten with each cell division. Lifestyle environmental stress (epigenetic factors) intensifies telomere shortening which leads to further cell ageing.

# WHAT IS EPIGENETICS?

---

Epigenetics is the study of biological mechanisms that switch genes on and off. DNA gives the instructions for various functional proteins to be produced inside the cell.

Epigenetics affects how genes are read by cells, and subsequently whether the cells should produce the relevant proteins. For example the COL1A1 gene in DNA is present in all types of cells but 'expressed' in skin cells to produce Type 1 Collagen proteins.

For a gene to express it needs a number of biochemical mechanisms which can be negatively influenced by lifestyle elements.

The latest advances in cosmeceutical and molecular biocosmetics has developed epigenetic actives:

Strengthens the natural mechanisms of DNA repair

Protects DNA (telomeres) from genetic modifications

Supports positive gene response in the repair of the epidermis



EPIGENESSE

EPIGENETIC  
ACTIVES



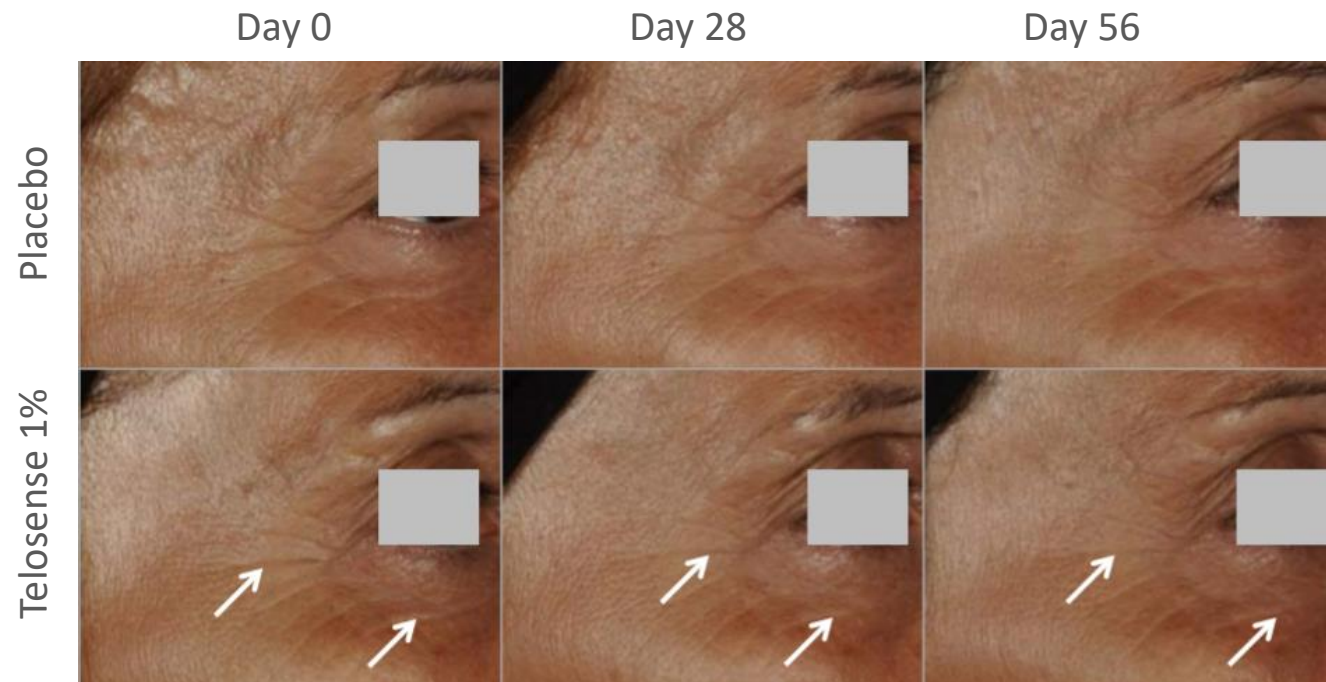
ANESI  
LAB

## TELOSENSE® BIOFUNCTIONAL

---

A complex of natural hydrolysed yeast and soya proteins proven to protect and stabilise telomeres.

- ✓ Helps protect and maintain DNA integrity
- ✓ Helps limit the accumulation of age-related markers to delay the onset of senescence in cells
- ✓ Reduces the appearance of depth and length of wrinkles



Clinical trials  
conducted on 15  
volunteers  
Average Age: 45 years  
Applied twice a day for  
8 weeks, during  
summer

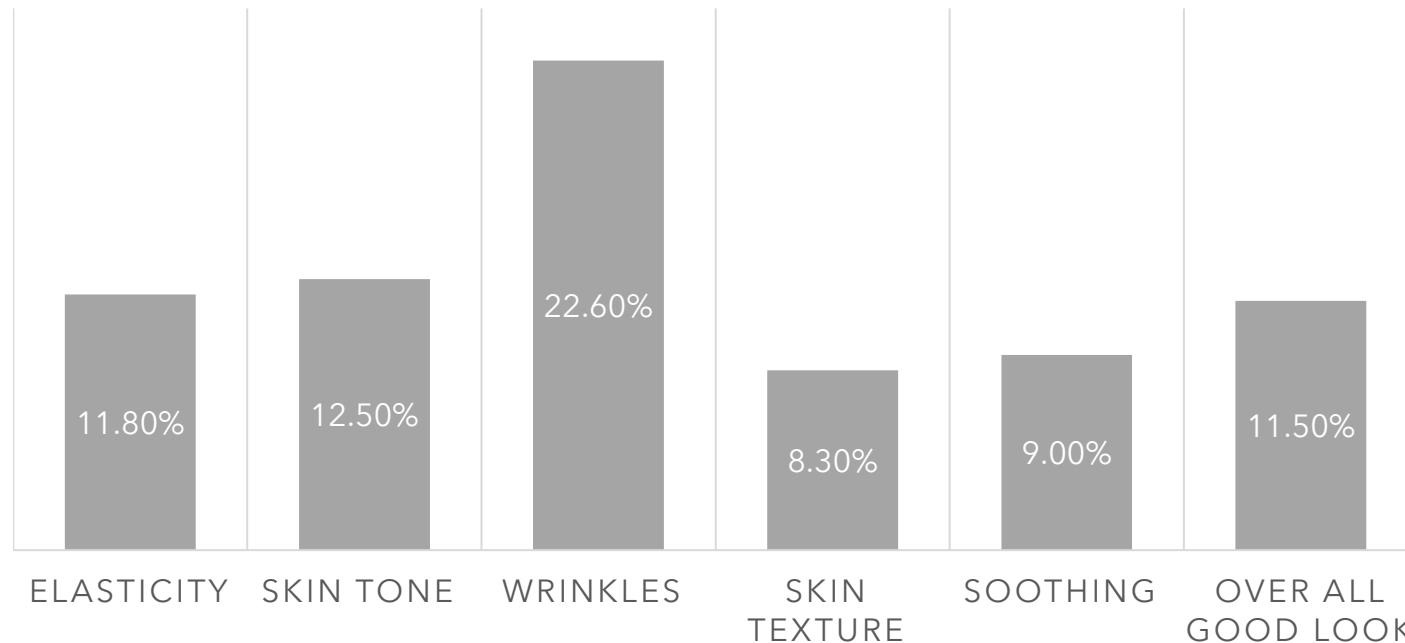


## EPIGENOMYL®

---

Obtained from the calendula flower and rich in oligosaccharides. Clinically proven to fight against the signs of ageing skin. It revitalises the epigenome (network of modifications surrounding DNA) that becomes weakened by external aggressors and age.

- ✓ Promotes Collagen 1 synthesis
- ✓ Preserves Elastin
- ✓ Inhibits MMP1 (enzyme that damages collagen and elastin)



Clinical trials  
conducted on 40  
volunteers.  
Average Age: 54 years  
Applied twice a day  
for 6 weeks



ANESI  
LAB

## PEPTIDE Q10

---

Combines Coenzyme Q10 (Co.Q10) and Vitamin E to provide a powerful antioxidant boost to help repair the skin and protect the skin from free radical damage.

Vitamin E and CoQ10 are the only naturally occurring fat soluble antioxidants in the skin.

Peptide Q10 boosts the synthesis of Coenzyme Q10 by up to 46% to improve cell energy and enhance the skin's natural antioxidant defence. Additionally studies show:

- ✓ Decreases sun damage
- ✓ Limits appearance of skin ageing (wrinkles and skin smoothness)



ANESI  
LAB

### Hyaluronic Acid:

A 'molecular sponge' able to capture 1000 times its weight in water to bring deep skin hydration and support connective tissues.

### Plant Oils and Ceremides:

Provide nourishing lipids and essential fatty acids to aid skin repair, protect and keep skin supple.

### Colloidal Gold:

Colloidal Gold nanoparticles enhances skin permeation and can activate the basal cells of the skin increasing collagen production for smooth supple skin.

In vitro studies show:

- Improve blood circulation and cutaneous elasticity
- Wrinkles and lines are reduced
- Blemishes are reduced and skin tone improved

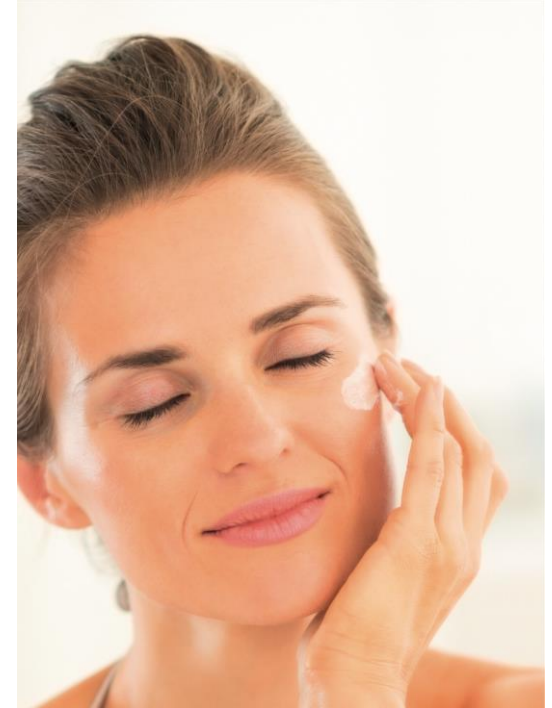
## A YOUNGER LOOKING AND MORE ENERGETIC COMPLEXION

---

EPIGENESSE targets 'gene expression' that has become weakened by external aggressors and by age.

EPIGENESSE helps reprogram the skin's behaviour by switching OFF negative cell messages and switching ON positive messages.

EPIGENESSE repairs the skin from damaging oxidative stress.



EPIGENESSE

## HOMECARE PRODUCTS



The most effective way to slow down the effects of time is with daily skincare. Epigenesse high-performance products work in harmony to repair and revitalise.

ANESI  
LAB

# HYDRA-SOFT TONING LOTION

---



A silky softening lotion to bring an extra boost of comfort and hydration after cleansing. Especially recommended for dry, dehydrated and sensitive skins. Restores the lipidic barrier to condition, protect and improve skin suppleness for super soft skin.

## How to use:

Apply to cotton pads and use to complete cleansing regime. Do not blot but allow to dry naturally on the skin for maximum hydration absorption.

## Key Ingredients:

- **Haberlea Rhodopensis:** 'Resurrection plant' hydrates and protects.
- **Hyaluronic Acid:** Deeply hydrates and plumps skin.
- **Tazman Pepper™:** Reduces inflammation.



# RENEWAL SERUM

---



A silky oil-rich serum with a powerful concentration of active ingredients to renew skin. Restores skin elasticity and increases fibroblast activity, while protecting cell DNA and repairing the skin from oxidative stress. Mica microparticles give a light-reflecting effect for increased skin radiance.

Apply daily to clean skin before day and night cream.

- **Peptide Q10:** Boosts Coenzyme Q10 synthesis for antioxidant protection and cell energy.
- **Telosense® Biofunctional:** Hydrolysed yeast and soya proteins helps protect telomere stability for wrinkle reduction.
- **Niacinamide (Vitamin B3):** Improves skin clarity and tone.
- **D-Panthenol:** Protects against environmental stress, moisturises and reduces inflammation.
- **Rosehip Oil:** Rich in nourishing EFAs and pro-Vitamin A for fast skin repair.
- **Vitamin F:** Cellular regeneration and intensely nourishing.

# REVITALIZING DAY CREAM

---



Restoring day cream formulated to preserve the skin's youth code for a nourished and hydrated complexion. Protects telomeres to limit epigenetic modifications and reduce depth and length of wrinkles. Helps limit DNA damage caused by UV exposure and maintains skin elasticity.

Apply every day after Renewal Serum.

- **Epigenomyl® Calendula Flower Actives** clinically proven to fight against ageing skin. It revitalises the epigenome to reactivate the skin's youth.
- **Telosense® Biofunctional:** Hydrolysed yeast and soya proteins helps protect telomere stability for improved skin appearance and wrinkle reduction.
- **Bio-Ceramidyl Pure:** Protects the epidermis, maintaining the integrity of the skin barrier.
- **Argan Oil:** 80% EFA's to nourish, restore and repair.
- **Shea Butter:** Rich in nourishing fats and vitamins to moisturise, protect and retain skin elasticity.

# REPLENISHING NIGHT CREAM

---



Luxurious, rich and deeply nourishing with smart skin actives to restore a youthful complexion overnight. Limits modification to the epigenome and protects DNA by ensuring the skin's youth code and aiding repair and rejuvenation for younger-looking radiant skin.

Apply every night after Renewal Serum.

- **Epigenomyl® Calendula Flower Actives** clinically proven to fight against ageing skin. It revitalises the epigenome to reactivate the skin's youth.
- **Telosense® Biofunctional:** Hydrolysed yeast and soya proteins helps protect telomere stability for improved skin appearance and wrinkle reduction.
- **Shea Butter:** Rich in nourishing fats and vitamins to moisturise, protect and retain skin elasticity.
- **Peach Kernel & Sweet Almond Oils:** Anti-inflammatory and restores skin lipid barrier to prevent water loss.
- **Sesame Oil:** Rich in EFA to nourish and repair.

# FLASH LIFT AMPOULES

---

Potent lifting ampoules for an immediate beautifying effect with visible and long-term skin firming benefits. Instant tightening effect reduces pore size and improves skin texture for a smoother younger looking complexion.

Apply to clean skin whenever the skin is need of an extra lift or a beautifying effect. Ideal for all skin types for special occasions!

Allow to penetrate before applying make-up.



- **Pore Reductyl NT:** Natural astringent (Agáric Acid from mushroom extract) that minimises pores, smooths and moisturises for an immediate “WOW” effect.
- **Cobiolift:** Extracted from quinoa seeds for immediate lifting, filmogen and clinically proven to reduce wrinkles:
  - 30% reduction in wrinkles within an hour
  - 60% reduction of "crow's feet" after an hour

EPIGENESSE

PROFESSIONAL



A replenishing, energising and revitalizing treatment with epigenetic actives and nourishing plant oils.

ANESI  
LAB

# ENERGY SKIN RESTORE TREATMENT KIT

---

Repairing and tightening actives immediately improve skin texture, reducing wrinkles and minimising pores for a flawless glowing complexion with long lasting results. Exclusive to the treatment is the Rejuvenating Gold Mask, rich in revitalising minerals and colloidal gold which stimulates collagen for a radiant supple complexion.



## TREATMENT KIT WITH 4 FACIAL TREATMENTS:

- GLYCOLIC PEEL 6ml
- HYDRA-SOFT TONING LOTION 10ml sachet
- SKIN REPAIR CONCENTRATE 3ml sachet
- REJUVENATING GOLD MASK 30g sachet
- FLASH LIFT AMPOULE 1.5ml vial
- REVITALIZING DAY CREAM 5ml sachet

# EPIGENESSE PROFESSIONAL ACTIVE INGREDIENTS

---



**GLYCOLIC PEEL:** Skin refining and brightening peel and helps the effectiveness of the treatment.

**Keratopeel PB:** Enzymatic exfoliator. **High Purity Glycolic Acid:** Stimulates cell regeneration for softer and brighter skin. **Pronalen AHA:** Concentrate of passion fruit, lemon, grape and pineapple, reduces the thickness of the stratum corneum and increases the skin hydration.



**HYDRA-SOFT TONING LOTION:** Boosts skin hydration and improves suppleness

**Haberlea Rhodopensis:** 'Resurrection plant' hydrates and protects. **Hyaluronic Acid:** Deeply hydrates and plumps skin. **Tazman Pepper™:** Reduces inflammation.



**SKIN REPAIR CONCENTRATE:** Maximum concentrate of actives to restore, repair and replenish

**Telosense® Biofunctional:** Hydrolysed yeast and soya proteins helps protect telomere stability for improved skin appearance and wrinkle reduction. **PEPHA®-TIGHT:** Microalgae rich in polysaccharides, vitamins, essential amino acids and antioxidants for immediate tightening effect and lasting firming action. **Peptide Q10:** Helps defend from the damaging environmental oxidative stress,

# EPIGENESSE PROFESSIONAL ACTIVE INGREDIENTS

---



**REJUVENATING GOLD MASK:** Energising, revitalising and lifting mask.

**Alginates:** Laminaria Digitata seaweed, rich in calcium and magnesium to revitalise, hydrate and tone. When mixed with water it jellifies to form a marine occlusive film. **Colloidal Gold:** Activates basal cells to increase collagen production improving suppleness and reducing wrinkles. **Gold nanoparticles** enhances skin permeation and improves blood circulation. In vitro studio show, improved elasticity, wrinkle reduction, inflammation and skin tone greatly improved.



**FLASH LIFT AMPOULE:** Immediate lifting effect reduces pore size and improves skin texture.

**Pore Reductyl NT:** (Agáric Acid) Natural astringent that minimises pores, smooths, and moisturises the skin for an immediate “WOW” effect. **Cobiolift:** Derived from quinoa. Immediate lifting filmogen and wrinkle smoothing



**REVITALISING DAY CREAM:** Restorative hydrating cream for revived radiance.

**Epigenomyl® Calendula Flower Actives** clinically proven to fight against ageing skin. **Telosense® Biofunctional:** Hydrolysed yeast and soya proteins helps protect telomere stability for improved skin appearance and wrinkle reduction. **Bio-Ceramidyl Pure:** Protects the epidermis, maintaining the skin barrier integrity. **Argan Oil:** 80% EFA's to nourish, restore and repair. **Shea Butter:** Moisturisers, protects and improves skin elasticity.





## EPIGENESSE TREATMENT OVERVIEW

1. ANESI welcome massage
2. CLEANSE: Aqua Vital X-Press, Mousse Radiance and Epigenesse Hydra-Soft Toning Lotion
3. PEEL & SKIN RESURFACING: GlycoPeel  
(optional Harmonie Gommage Caresse for eye area)
4. REPLENISH: Skin Repair Concentrate

### **'renew –relax massage'**

Tones, smooths and soothes the skin.  
Relieves tension for a brighter,  
younger looking appearance.

5. REJUVENATE : Gold Alginate Mask
6. LIFT: Flash Lift Ampoule
7. HYDRATE: Revitalizing Day Cream
8. ANESI farewell protocol

## VISIBLE RESULTS: AFTER 1 TREATMENT

BEFORE



AFTER



BEFORE



AFTER





## VISIBLE RESULTS: AFTER 1 TREATMENT

BEFORE



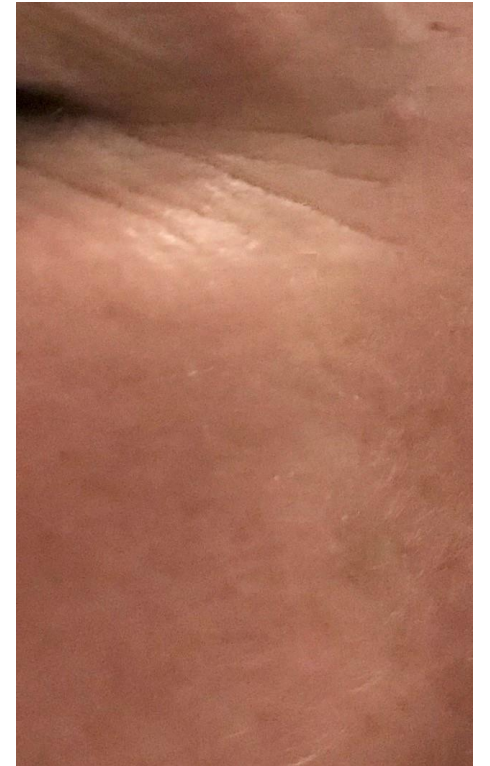
AFTER



BEFORE



AFTER



EPIGENESSE

BEAUTY  
SCIENCE



ANESI  
LAB