



Reach for excellence

APILUS[®]
xCell
27.12 MHz



Apilus xCell: above and beyond.

You challenged us. This is our response. *Apilus xCell* sets a new standard in the field of 100% permanent hair removal by raising the efficiency, speed and comfort of its predecessors to a whole new level. Sophisticated design with touch screen, personalized treatment programs and the unique 27.12 MHz radio frequency all add up to give you a perfect combination of usability and performance.





Ergonomic Flip-Top Cabinet

Enhance your day-to-day life.

Apilus xCell is unlike any other electrolysis machine. By gracing the machine with a flip-top aluminum cabinet, we were able to create an elegant, ergonomic and streamlined structure. Furthermore, its touch screen and intuitive navigation makes the *Apilus xCell* very easy and user-friendly.

High Resolution Touch Screen

The *Apilus xCell* will add a burst of color to your day while simplifying your work. Its touch screen offers fast response, high resolution, and perfect visibility. Its colors are vibrant and the format is ideal.

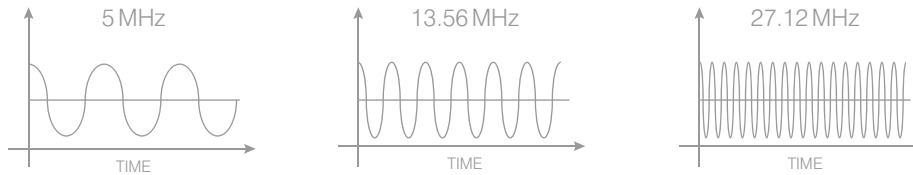
Intuitive Navigation

Hours of fun! Navigating the *Apilus xCell* is so simple and pleasant. You'll be hooked by the visual interfaces which will enable you to do everything quickly and easily!

Ergonomic Flip-Top Cabinet

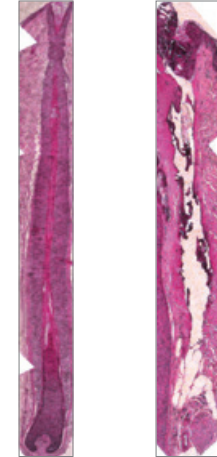
Advanced technology calls for an advanced cabinet. Thanks to its retractable flip-top front, the *Apilus xCell* is the most ergonomic and practical device of its kind. In addition to being sophisticated, it adjusts perfectly to your field of vision, regardless of your position.





27.12MHz radio frequency compared to 5MHz and 13.56MHz

Untreated Hair Treated Hair



Destruction produced by 27.12MHz radio frequency on a hair follicle
Studies conducted by the LOEX Research enter. Québec, Canada.

Offer exceptional comfort and effectiveness.

If today's electrolysis is efficient, rapid and very comfortable, it's surely thanks to the unique 27.12 MHz radio frequency of *Apilus*. *Apilus xCell* propels this technology to even greater heights by combining artificial intelligence with increased power and outstanding comfort.

Quicker Results

A worldwide unique design, the *Apilus xCell* uses a 27.12 MHz ultrafast radio frequency. Since this frequency is up to 6 times faster than that of other hair removal devices, the *Apilus xCell* focuses the energy more intensely at the base of the hair, producing permanent results much more quickly on all hair types.

Increased Power

The *Apilus xCell* is 35% more powerful than the *Apilus Junior 3G* and 10% more powerful than the *Apilus Platinum*. This additional power provides a faster coagulation, and therefore a higher level of comfort and effectiveness.

Exceptional Comfort

Thanks to its 27.12 MHz ultrafast radio frequency and exclusive techniques, the *Apilus xCell* offers an unparalleled level of comfort for permanent hair removal. In fact, the treatment is performed so quickly that the sensation is barely noticeable. Mere thousandths of a second are enough to eliminate unwanted hair! By offering such a high level of comfort, the *Apilus xCell* has become the preferred solution for all body areas and types of clients, including the most sensitive ones!

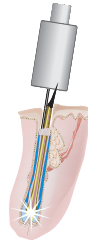


Stand out from the crowd!

On top of the renowned treatment modes like *PicoFlash*, *Synchro* and *EvoluBlend*, *Apilus xCell* offers electrologists two new methods of hair removal: *MeloFlash* and *SynchroBlend*. Combined with new programs specially optimized for men and women, these exclusive techniques will be your best allies in achieving 100% permanent hair removal in record time!

PicoFlash

As a result of its exceptional speed, the *PicoFlash* thermolysis technique allows for a very localized and precise coagulation at the base of the hair follicle, while avoiding the diffusion of heat into the surrounding tissues. It offers targeted destruction of the cells responsible for the regrowth of all types of hair, all at a level of comfort that is sure to stun your clients.



MultiPlex

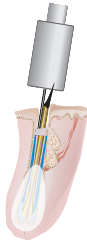
The *MultiPlex* technique combines slow thermolysis with an ultrarapid *PicoFlash* pulse. The slow thermolysis creates a slight warming of the follicle, enhancing its porosity, and thus the effectiveness of the *PicoFlash* pulse. It allows for an intense destruction ideal for difficult or slightly deformed hairs.



MeloFlash

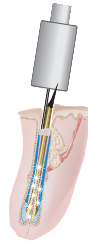
New

MeloFlash is a thermolysis method conducted in hundredths of a second. Since the impulse time is longer and the intensity more gentle, the heat produced is dispersed more widely within the follicle. This technique is the ideal solution for strong, deep, or dehydrated hair.



Synchro (patented)

The *Synchro* method offers unequalled effectiveness in the removal of difficult and/or deep-rooted hair. Its simultaneous application of several pico-impulses, each lasting from 2 to 5 thousandths of a second, interspersed with a thermal relaxation period, allows for the intense destruction of all germ cells. This technique must be combined with a bulb-to-bulge movement and conducted with insulated probes.



SynchroBlend

New

The *SynchroBlend* method applies a layered galvanic current of several pico-impulses, interspersed with a thermal relaxation period. Designed for coarse distorted anagen hair, this technique may be combined with a bulb-bulge movement, and must be done with *IsoBlend* insulated probes.



EvoluBlend

The *EvoluBlend* method is characterized by the progressively intensified application of a galvanic current, starting at an intensity of 0 mA, and increasing to your patient's tolerance level. A thermolysis current of 27.12 MHz is applied simultaneously, ensuring an effective and comfortable treatment on even the most difficult hair.





Enjoy artificial intelligence.

The *Apilus xCell* is a device with exceptional intelligence. It thinks for you, while leaving you the freedom to modify the settings and to choose those that best suit each of your clients. Simply select the gender of your client, the treatment area, the hair size and the probe used, and the *Apilus xCell* will suggest the adequate treatment parameters. In addition, it automatically offsets the current depending on the level of moisture of the area, providing superior comfort and effectiveness.

Intelligent Programs

The *Apilus xCell* offers a full set of treatment programs that adjust according to the area of the body, the hair type, and even the gender of the client. Effectiveness, safety, and comfort guaranteed!

APIL Function

The *APIL* Function (Artificial Pro•Tec Intelligence Levels) recalibrates the programs in accordance with the type and calibre of probes used. You will therefore have very precise parameters to follow in order to minimize the risk of skin reactions.

Automated Adjustments

The *Apilus xCell*'s circuit automatically adjusts the intensity of the current according to the level of moisture of the treated area, allowing for a much more comfortable treatment session.

Progressive Galvanic Current

The redesigned galvanic current circuit progressively moderates the increases and decreases in intensity to provide an optimal level of comfort during Blend treatments, Cataphoresis, or other aesthetic treatments.





Increase your revenue streams.

While *Apilus xCell*'s main function is permanent hair removal, it does so much more! It's an 11-in-1 system that will allow you to offer complementary treatments to your clients and turn a profit on your investment in the blink of an eye.

Permanent Hair Removal

Perform hair removal treatments that are 100% permanent and gentle on all skin and hair types.

Anaphoresis

Purify your client's skin with this deep-cleansing treatment.

Cataphoresis

Calm the skin, reduce redness and prevent skin reactions with this essential post-epilation treatment.

Thermocoagulation¹

Visibly reduce the appearance of superficial skin imperfections, such as redness and pigment spots with this precise treatment.

Meso-Ionization and IonoMassage²

Improve the penetration of ionizable cosmetic products and deeply nourish your client's skin.

Light Therapy³

Offer anti-aging, acne, and coupe-rose treatments with red, blue, and green light therapy.

StimuloMassage⁴

Regenerate and stimulate your client's skin with this anti-aging treatment.

Infrared Therapy⁵

Deeply tone skin and reduce the appearance of cellulite with this infrared diode-based treatment.



Micro-Stim⁶

Promote the elimination of toxins and illuminate the complexion with this invigorating treatment.



Micro-Lift⁶

Firm the skin and reduce the aspect of wrinkles with this rejuvenating treatment.



Micro-Poration⁶

Provide essential nutrients to the cells to give back a healthy and youthful appearance to the skin.



1. Mandatory specific course. 2. Vitaphase IM device sold separately. | Included with the Pro version. 3. Vitaphase LT device sold separately. 4. Vitaphase SM device sold separately. 5. Vitaphase IR device sold separately. 6. Beauty care option sold separately.



Manage effectively.

The *Apilus xCell Pro* version features a whole range of tools that facilitate the professional management of your work activities. Not only will you save time, but you will also be able to provide better customer follow-up, and offer more customized services. It's like having a personal assistant in your clinic at all times!

Customized Client Files

The *Apilus xCell* device allows you to store more than 1,000 client files in its memory. Every file contains personal information and treatment history, including the modality and treatment programs used for every treated area. A simple way of ensuring good customer care!

Medical Records

Each file saved in the *Apilus xCell* device is paired with a medical record detailing your patient's state of health. This function allows you to easily check whether there are contraindications to treatment, or if other details must be taken into account. The *Apilus xCell* will remind you of these peculiarities at the beginning of every treatment. Genius!

Treatment Statistics

How much time is necessary to permanently remove hair from a specific area? The *Apilus xCell* device now allows you to quickly answer this question, since it saves the details of all your clients' treatments, and for every area of the body. In addition to providing information that is useful to your clients, this feature will facilitate the sale of your services!

Appointment Calendar

The *Apilus xCell* has everything covered! In fact, at the end of each treatment, it reminds you to enter the client's next appointment into the calendar, and saves it automatically to his or her file. A list of upcoming appointments, along with the client's name and telephone number can also be printed in order to facilitate daily schedule management.

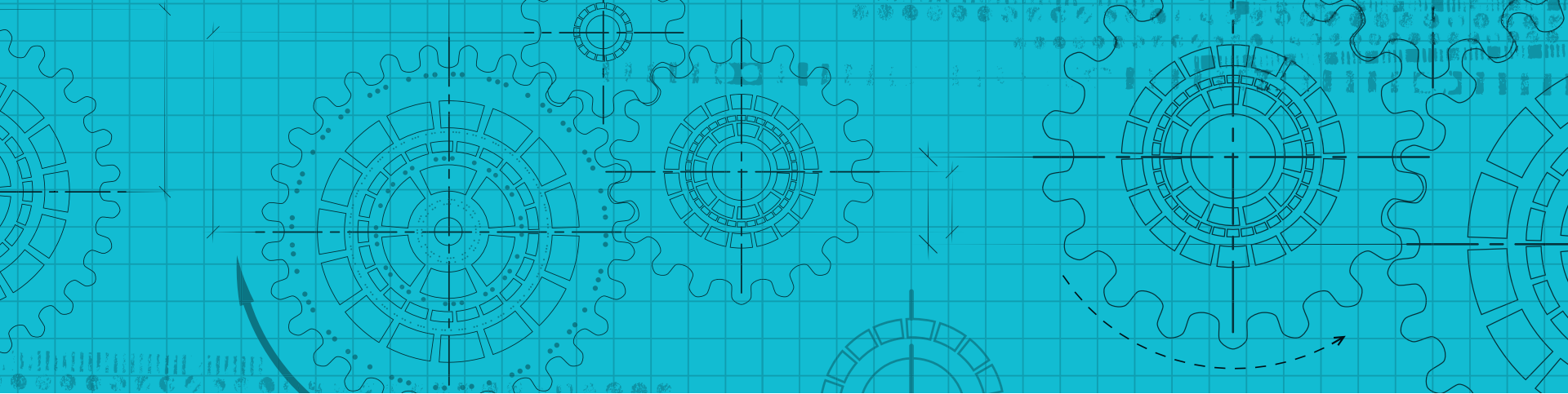
Easy Invoicing

The *Apilus xCell* features a simplified invoicing and revenue management function. In fact, since it saves your various invoicing rates as well as the duration of each treatment, all you have to do is press a button at the end of the session to print an invoice! It's that simple! Additionally, it counts all of your revenue once you reach the end of a term.

Prepaid Hair Removal Cards

Thanks to the *Apilus xCell Pro* device, you may now offer your clients prepaid hair removal cards. These cards allow you to inspire loyalty in your customers, all while ensuring faster revenue. As for your clients, they will enjoy a more convenient payment method and benefit from an advantageous hourly rate at their favourite salon.





Work with confidence.

The gentle way to permanent hair removal. That's the promise we make with *Apilus*. If you are as uncompromising on matters of safety as we are, you will certainly appreciate the many features specially designed and integrated into *Apilus xCell* to ensure your clients' comfort as well as your own peace of mind.

Stability Control

Unique to *Apilus* technology, the MP/XCL-25 current control circuit offers an extraordinary level of stability. In addition, it systematically monitors the current's intensity according to the impedance of the treated area.

Watch-Dog XCL

The *Watch-Dog XCL* system continuously monitors the control circuit activity in order to immediately discontinue all current outputs in the event of an anomaly. Also, since it is equipped with a highly sophisticated dual microprocessor, no software activity can interfere during the treatment.

Aluminum Composite Cabinet

Made with sturdy aluminum composite, the *Apilus xCell* adheres to the strictest medical requirements in terms of frequency emissions. Durable, environmentally friendly, and safe!

Our attention to the quality of our services.

Apilus owners deserve the best. That is why we believe that the perfect customer experience is not limited to the design and manufacture of excellent permanent hair removal equipment. Every electrolysis device made by *Dectro International* is protected by *Apilus* privileges, the most complete package of benefits in existence. With an exceptional guarantee, devoted customer service, and diversified marketing support, we are with you from beginning to end to ensure your experience is the most satisfying it can be.



Apilus Guarantee

Apilus devices are manufactured according to the highest industry standards. They are guaranteed to be free of all parts and manufacturing defects for a period of thirty-six (36) months from the date of purchase, including the cost of parts and labour. For even greater peace of mind, ask for more info on the *Apilus* extended warranty.

Customer Service

When you have a question, we will be there to help. For example, our friendly and courteous staff may assist you in the operation of a specific function with your *Apilus* equipment, as well as help you to find the nearest *Apilus* dealer.

Technical Support

Apilus technicians have the knowledge and experience needed to help you in maintaining the performance level of your device. In the event of a malfunction or damage, one call does it all. Regain your peace of mind and enjoy your revitalized device.

Professional Training

We know that training is a key element. This is why each *Apilus* device comes with a user-training session. The *Académie Apilus* trainers are specialists in their fields, and will be more than pleased to introduce you to the programs and accessories, and to explain how to make the most of your investment.

Apilus Centre Directory

Many local or international consumers are looking for professional clinics that offer permanent hair removal services with *Apilus*. For this reason, we have created a directory of *Apilus* Centres on the dectro.com website, allowing owners to sign up and enjoy free online credibility and visibility.

Marketing Tools

We want to kick-start your *Apilus* experience. Whether you need brochures or posters for your clinic, or videos and photos for your website, we offer a multitude of marketing tools. We take pride in your success.

Technical specifications and accessories.

MODALITIES

THERMOLYSIS

	xCell Pro	xCell Pur
PicoFlash	●	●
MeloFlash	●	●
MultiPlex	●	●
Synchro	●	○

BLEND

	xCell Pro	xCell Pur
PicoBlend	●	●
OmniBlend	●	●
MultiBlend	●	●
EvoluBlend	●	○
SynchroBlend	●	○

POST-TREATMENT / BEAUTY CARES

	xCell Pro	xCell Pur
Cata Ion +	●	●
Cata Ion –	●	●
Cata IonoMassage +	●	○
Cata IonoMassage –	●	○
Micro-Stim	○	○
Micro-Lift	○	○
Micro-Poration	○	○

PROGRAMS

CUSTOMIZATION

	xCell Pro	xCell Pur
22 areas (11/men - 11/women)	●	●
10 hair sizes	●	●
3 probe types (INOX, ITH, IBL)	●	●
5 probe calibres	●	●
Customizable programs	●	

CLIENT RECORDS MANAGEMENT

	xCell Pro	xCell Pur
1000 client files	●	
Appointment schedules with reminder lists	●	
Medical records	●	
Treatment statistics	advanced	basic
Rechargeable smartcards system	●	
Invoicing and cumulative revenue management	●	
Internal printer	●	
10 user interfaces with passwords access	●	
USB port for data recovery and updates	●	●

LEGEND:

● Included ○ Optional

OTHER FEATURES

xCell Pro

xCell Pur

FUNCTIONS

Skin hydration test, accessory test and blend tolerance test	•	•
U.L. and E.L. display	•	•
Pedal-free operating mode	•	•
2 output connection ports for probeholders and Vitaphase devices	•	•

ELECTRONIC CIRCUIT

Exclusive 27.12 MHz radio frequency	•	•
Millisecond response time	•	•
Progressive galvanic current	•	•
Automatic hydration compensation response	•	•
MP/XCL-25 microprocessor	•	•
Watch Dog XCL security system	•	•
Meets all medical standards	•	•
Universal power adapter	•	•

DESIGN

Color touch screen and user friendly navigation	•	•
Ergonomic flip-top aluminium cabinet	•	•
Accessory holders	•	•

ACCESSORIES

xCell Pro

xCell Pur

2 probeholders (1 short and 1 regular)	•	•
1 red cable and 1 black cable	•	•
1 bar-electrode and 1 plate-electrode	•	•
1 set of 4 multifunction electrodes	•	•
1 footswitch	•	•
1 Vitaphase IonoMassage IM device	•	
1 USB key and 1 stylus	•	•
1 user manual	•	•
10 rechargeable smartcards	•	

Apilus xCell's base
also available in option



APILUS[®] xCell Pur



APILUS[®] xCell Pro



YOUR APILUS XCELL DISTRIBUTOR

dectro
INTERNATIONAL

More than 35 years
of expertise
in electrolysis

ISO*



Dectro International - Head Office*

www.dectro.com

***Quality Management System
Certified Medical Company:
ISO 9001: 2008 & ISO 13485: 2003**



66-0456
140515

Printed in Canada